




TISP

Tsuru International
Student Program

At a glance

<p>What's TISP?</p>	<p>TISP (Tsuru International Student Program) is a program designed for not only the students learning Japanese, but also for those who desire to explore the Japanese language and culture in a small rural community in Japan. This program offers a variety of courses and cultural events to deepen your understanding of the beauty of our environments and enrich your intercultural knowledge. All exchange students will be supported on their academic activities and living situations in Tsuru by Tsuru student-tutors. Student-tutors organize extracurricular activities and events as well. Exchange students can participate in the traditional and cultural events and activities in the local community of Tsuru City.</p>
<p>Duration</p>	<p>Autumn Semester End of August – Beginning of February</p>
	<p>Spring Semester Mid-February – Beginning of August</p>
<p>Japanese intensive</p>	<p>For Autumn Semester: in September</p>
	<p>For Spring Semester: in March</p>
<p>Mandatory Courses</p>	<p>Japanese language courses for all TISP students in each semester</p>
<p>Class hours & credit system</p>	<p>90 minutes x 15 weeks = 2 credits ● 2 credits are equivalent to 3 ECTS</p>
<p>Accommodation & living cost in Tsuru</p>	<p>International House Monthly rent: JPY 35,000 (around € 210) Living cost in Tsuru Approximately JPY 80,000 – JPY 100,000 (€ 475 - € 595) per month including the rent, utility bills, food, insurance and other miscellaneous expenses.</p> 
<p>Insurance</p>	<p>Japanese National Health Insurance (Mandatory) This insurance covers 70 % of the total costs of care at clinics and hospitals. Once you are registered as a resident at Tsuru City Hall, you will receive payment slips, about JPY 3,500 per month.</p>
	<p>Personal Accident and Injury Insurance for Student during Education and Research (Gakkensai) and the Personal Liability Insurance (Mandatory) This insurance premium can cover the costs for accidents that occur during curricular hours, school events and while on campus. The premium would be around JPY 2,000 for the period of studying at Tsuru University.</p>
	<p>Others Please purchase the insurance premiums for other coverages at your home country.</p>

About Tsuru University

Tsuru University is a public university located in the city of Tsuru, a historic town located at the north-eastern part of the Mt. Fuji area in Yamanashi Prefecture, Japan. Our university offers high quality education in teacher education, literature, linguistics and liberal arts.

Presently, the university enrolls about 3,200 undergraduate students and 40-50 graduate students. We accept many international students from over 10 countries. Our campus is also known as the "Forest Campus", because the campus is surrounded by nature. For instance, you may have a chance to see giant flying squirrels inhabiting on and around the campus.



About Tsuru City

Conveniently located about 90 minutes west of the metropolitan area of Tokyo (by express train ride), Tsuru City was developed as a castle town during the Edo Period (17th-19th century). It became known as a production and distribution center of silk and related products. While the silk and textile industry has declined in production, the city, with a population of about 30,000, has developed in recent years as a high-tech research and development center of Maglev technology.

About 30 minutes on train, you can visit The World Cultural Heritage, Mt. Fuji and the beautiful Five Fuji Lakes.




Course List

Listed courses are offered in 2024.

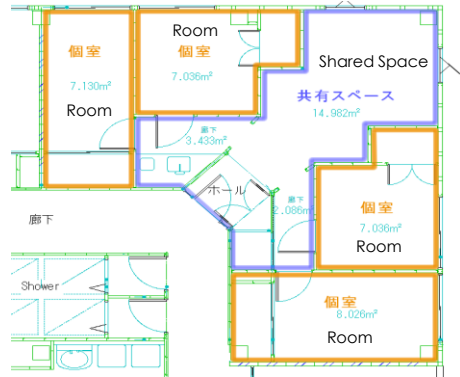
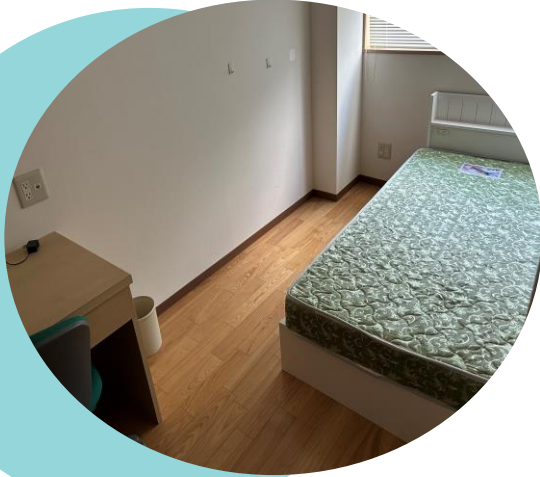
(#) Number of credits

★ Taught in Japanese only

Autumn Semester	Spring Semester
Intensive Japanese Course (4)	Intensive Japanese Course (4)
Japanese F2, F3 or F4 (6 each)	Japanese S2, S3 or S4 (6 each)
★Japan Study (Pop Culture) (2)	★Japan Study (Politics & Economy) (2)
★Japan Study (Traditional Culture) (2)	★Japan Study (Contemporary Society) (2)
Japan Study (Arts) (2)	Japan Study (Film Culture) (2)
Japanese Culture Seminar (Internship) (2)	Japanese Culture Seminar (Internship) (2)
Introducing Japan II (2)	Introducing Japan I (2)
Introducing Mt. Fuji II (2)	Introducing Mt. Fuji I (2)
World Englishes II (2)	World Englishes I (2)
Discussion and Debate II (2)	Comparative Media Studies (2)
Japanese Calligraphy (2)	<div data-bbox="729 1058 1343 1265" style="background-color: #009688; color: white; padding: 10px; border-radius: 15px; margin-bottom: 10px;"> <ul style="list-style-type: none"> ● The courses may vary. ● More courses will be added in spring semester. </div> 
Environmental Issues in Modern Society (2)	
Independent Studies (2)	
Japanese Visual Culture (2)	
Japanese Subculture (2)	
Education and Sustainable Environment (2)	
Research Study Methodologies (Quantitative and Qualitative) (2)	
Comparative Philosophy of Education (2)	
Cross-Cultural Communication (2)	
History of Eastern and Western Ideas (2)	
Theory of International Relations (2)	
Pop Culture I (2)	
British Novels (2)	

International House

This is the shared house for all exchange students. Each floor has 4 units and each unit consists of 4 single rooms. Students will share the kitchen and the living room with their unit mates, and the shower and the restroom with their floor mates.



Unit Layout

Cultural Experiences

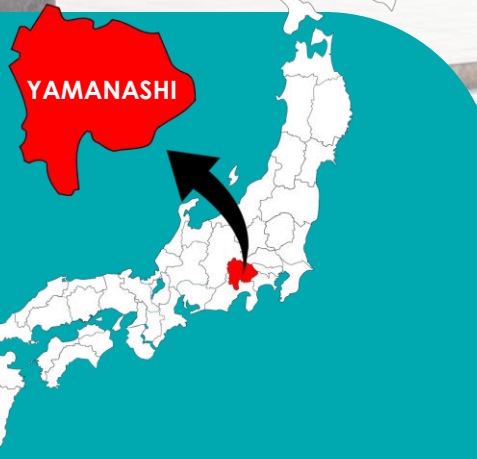
The Global Communication Center offers various cultural events with Tsuru student-tutors both on and off campus. Exchange students are welcome to take part in the community festivals and events.





 **TSURU** University

HOW TO GET TO TSURU UNIVERSITY



The Global Communication Center
Tsuru University
3-8-1 Tahara Tsuru-City, Yamanashi 402-8555 Japan



+81-554-43-4341



studyabroad@tsuru.ac.jp



www.tsuru.ac.jp